

HOW TO PLAY “TEAM DOC”

WHY “TEAM DOC”?

As the Official Team Physicians and Orthopedic Partner of Minnesota United FC, “Team Doc” is a fun game for all ages that reinforces Allina Health’s commitment to healing its patients and getting them back onto the field – regardless if they are world class soccer players or average joe’s.

OBJECT OF THE GAME

The object of the game is to carefully insert the six game pieces - using the electromagnetic wand - into the game table’s patient as quickly as possible. The clock determines the best time

WATCH A VIDEO OF IT BEING PLAYED

View a video of the game being played recently at Allianz Field by one of our talented brand ambassadors.

Scan the QR Code
to view video.



HOW TO PLAY THE GAME

- Start the game by ensuring the six game pieces are in their starting locations, the wand is in its holder and by resetting the clock to 00:00.
- The clock will begin when the player removes the magnetic wand from its holder – and it will stop once all game pieces have been inserted and the wand is returned to its holder.
- The player begins the game by removing the magnetic wand from its holder and using it to carefully pick up and insert each game piece.
- Once all game pieces are inserted, the player will return the wand to its holder to stop the clock – ending the game.
- YELLOW CARD FOUL: If the player errantly touches the game board with a game piece during play, the soccer referee will be illuminated indicating a **yellow card foul!** This foul turns off the magnetic power of the wand for 4 seconds – so the player will lose valuable time with each yellow card foul. After 4 seconds, power will be automatically restored to the wand for the player to continue the game.

HOW TO RESET GAME BOARD

- Pull the manual release bar located underneath the game table with two hands (see Step 14) to allow the game pieces to slide back to their starting positions.
- Double check all pieces are in starting positions.
- Ensure the magnetic wand is in its holder and reset the clock to 00:00.

TROUBLESHOOTING

If any game board issues do occur:

- Verify battery is fully charged.
- Verify battery USB is properly connected.
- Verify wand cables are properly connected.
- Swap out battery with spare battery.
- Swap out magnetic wand with spare wand.
- Ensure gameboard and game pieces are free of dust and dirt (for game pieces to properly slide).
- Verify the manual release bar is in its upright position (if game pieces slide unexpectedly).
- Verify wand is properly set in its holder (for clock stoppage).

ALLINA HEALTH “TEAM DOC” GAME

PAGE 1

*SET UP AND GAMEPLAY INSTRUCTIONS *



TRAVEL CRATE WEIGHT: 55 lbs

CRATE
DIMENSIONS:
48" x 30" x 13"

PRO TIPS:

*The travel crate is too large for transporting in a car – an SUV or pickup is needed (if transporting it on your own).

*It's **HIGHLY RECOMMENDED** to move, set up and tear down with a helper.

*Before your event, double check the batteries are charged, and all game elements are accounted for prior to your event date.

INSIDE CRATE

- 2 Back Legs
- 2 Front Legs
- 2 Batteries
- 2 Magnetic Wands
- 1 Battery Charger
- 1 Step Stool
- 6 Game Pieces
- 1 Game Board
- 1 Instruction Sheet

"TEAM DOC" GAMEBOARD SET UP INSTRUCTIONS

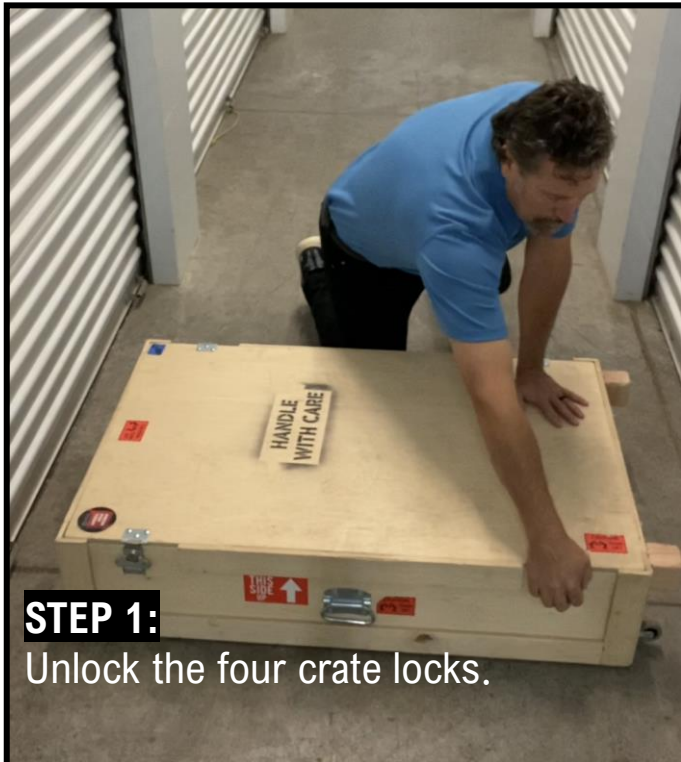
[For tear down, simply reverse these steps.]

PAGE 2

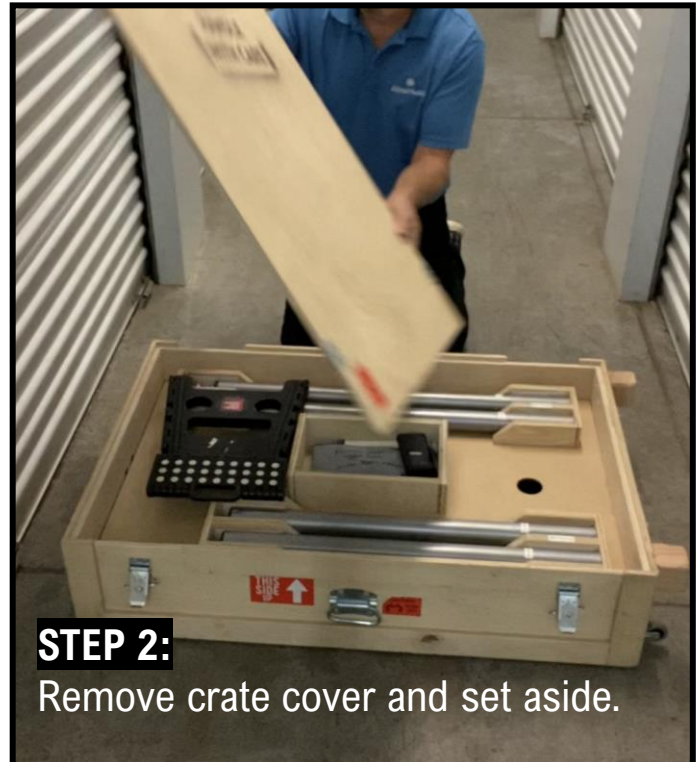


PRO TIP:

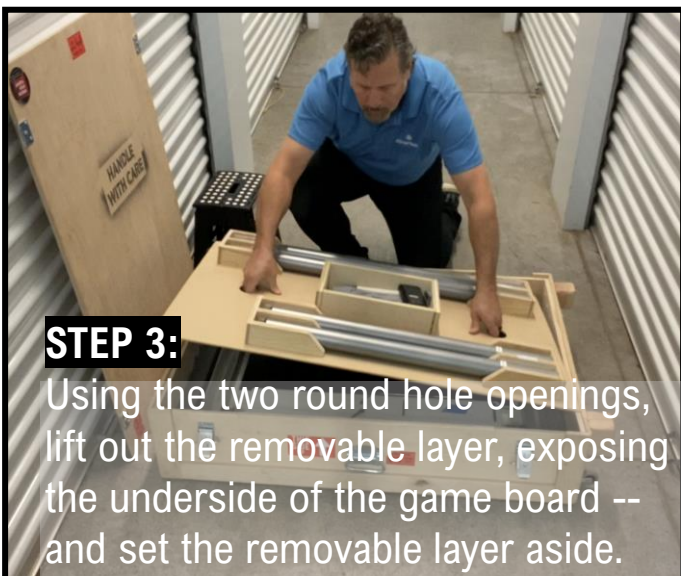
Scan the QR code to view a video of the set up and tear down process.



STEP 1:
Unlock the four crate locks.



STEP 2:
Remove crate cover and set aside.



STEP 3:
Using the two round hole openings, lift out the removable layer, exposing the underside of the game board -- and set the removable layer aside.



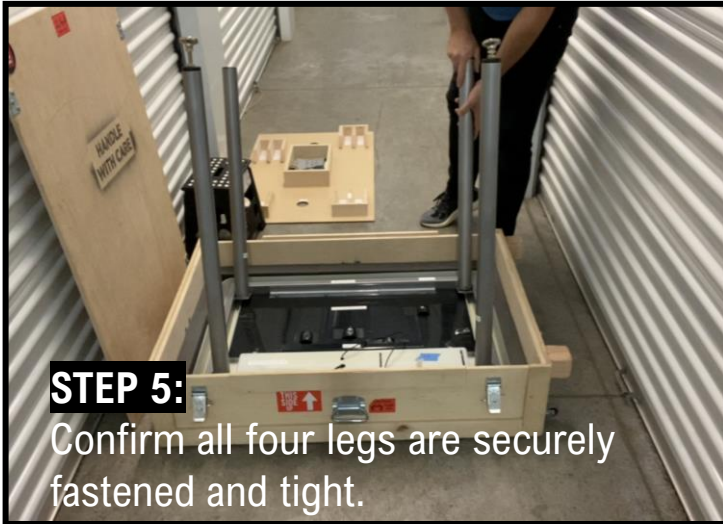
STEP 4:
Carefully screw on the front and back legs.

IMPORTANT: the legs are angled, so properly nest each leg and do not cross-thread as you tighten. This can damage the legs.

HOW TO SET UP TEAM DOC GAMEBOARD

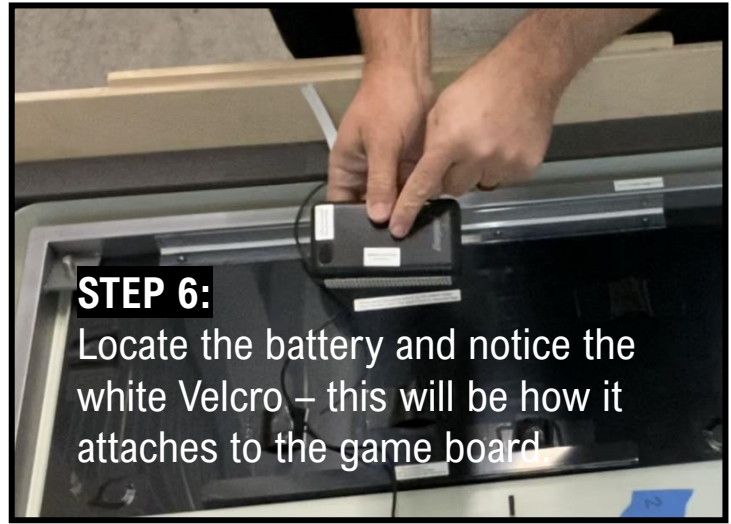
(continued)

PAGE 3



STEP 5:

Confirm all four legs are securely fastened and tight.



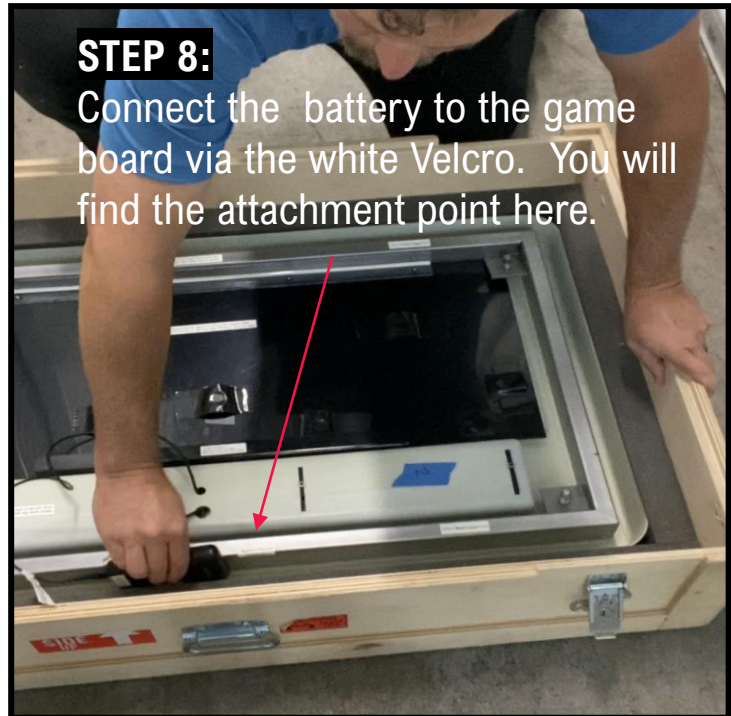
STEP 6:

Locate the battery and notice the white Velcro – this will be how it attaches to the game board.



STEP 7:

Connect the game board's USB cable to the battery. Power on battery.



STEP 8:

Connect the battery to the game board via the white Velcro. You will find the attachment point here.



STEP 9:

Lift game table from the crate.

IMPORTANT: NEVER handle the plastic sides – only grasp the game board by the steel frame or legs.

IT IS RECOMMENDED TO HAVE A HELPER ASSIST YOU IN THIS STEP!!



STEP 10:

Place upright game table on a level surface.

NEVER move it by holding the plastic sides – only handle game board by the steel frame or by grasping its legs.

HOW TO SET UP TEAM DOC GAMEBOARD (continued)

PAGE 4

STEP 11:

Level the back legs if necessary. NOTE: A steep angle is needed for game pieces to slide during game play.

STEP 12:

Connect magnetic wand cable to the game board cable.

Insert wand into the game board.

STEP 13:

Push the reset button to reset the clock. NOTE: the clock runs whenever the wand is not in its holder and stops when in the holder.

STEP 14:

Using two hands, gently pull down the hinged, manual release bar. This will drop the game pieces into their starting positions.

IMPORTANT: ALWAYS RETURN TO UPRIGHT POSITION FOR GAME PLAY!

STEP 15:

Ensure all game pieces are in their specific starting location.

IT'S GAME TIME!

You are now ready to see who has what it takes to become an Allina Health "Team Doc"!

As of October 1, 2022, the fastest recorded time is 16 seconds!